

Agricultural Building Truss Construction

Canadian Farm Builders Association April 28,
2023

Stratford, Ontario

Brian Barron, CHSP Sr. Manager

Roger Jeffreys P. Eng., DFE
Provincial Engineer

Access and Fall Protection

Ontario Regulation 213/91 for Construction Projects.

- When work cannot be done from the ground, or other permanent structure without a hazard to workers, a worker must be provided with a scaffold or other work platform that meets the intent of subsection 125(1)
 - Platform must be at least 460 mm wide (18")
 - If it is above 2.4 metres (8'), must have guardrails
 - Must be provided with a means of access (ladder or stairs)
- When working in the trusses above 3 metres (10') and not protected by guardrails, all workers must be adequately protected by fall protection.

Access and Fall Protection

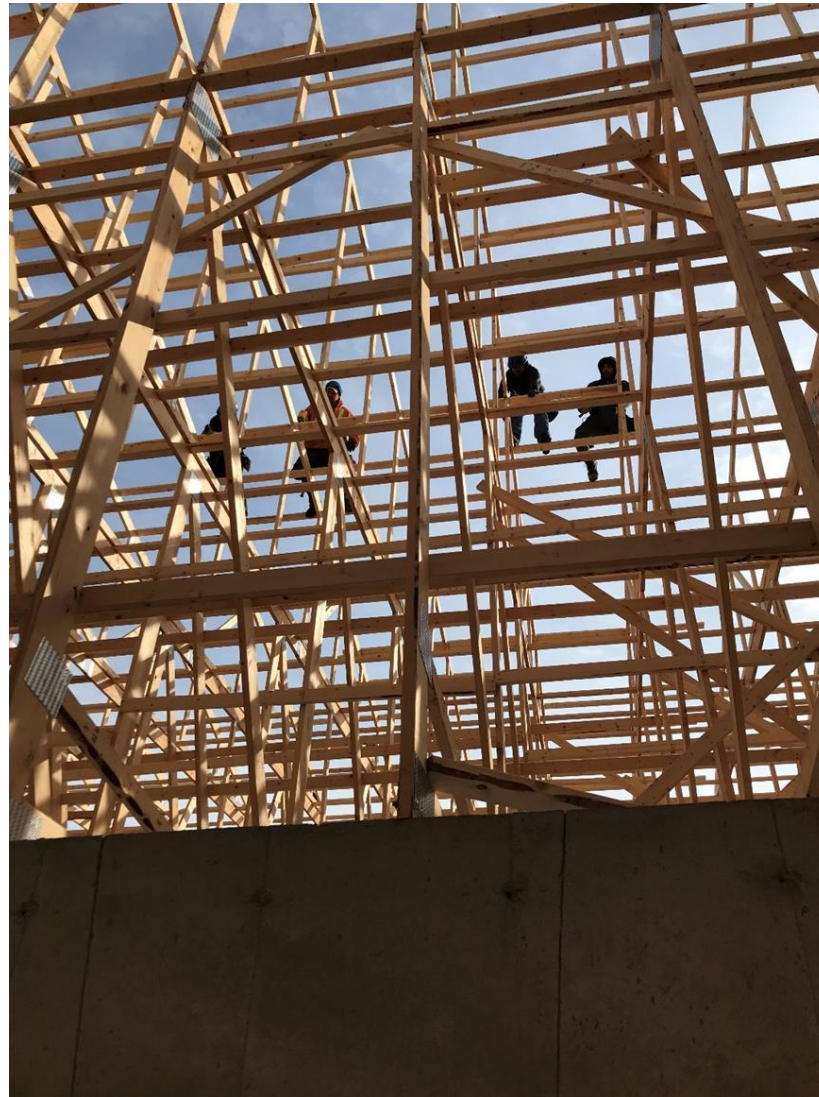
Cases

- In May 2017, a worker was constructing a large drive shed on a farm property near Petrolia. He was completing the bracing between trusses when the brace he was standing on broke away causing him to fall to his death 23' below.
- In March 2013 a worker fell when installing strapping on roof truss when the strapping broke. The worker sustained 2 broken heels. The worker has not been able to return to construction work due to long term injury.
- In August 2020 a worker fell when installing roof sheathing, stepped on strapping and broke. The worker sustained a broken leg, broken ribs and fractures to the face. The worker has not been able to return to construction work due to long term injury.
- In March 2022 a worker fell approximately 17 feet while working on a truss with no fall protection. The worker succumbed to his injuries.
THIS MATTER IS BEFORE THE COURTS.

Access and Fall Protection



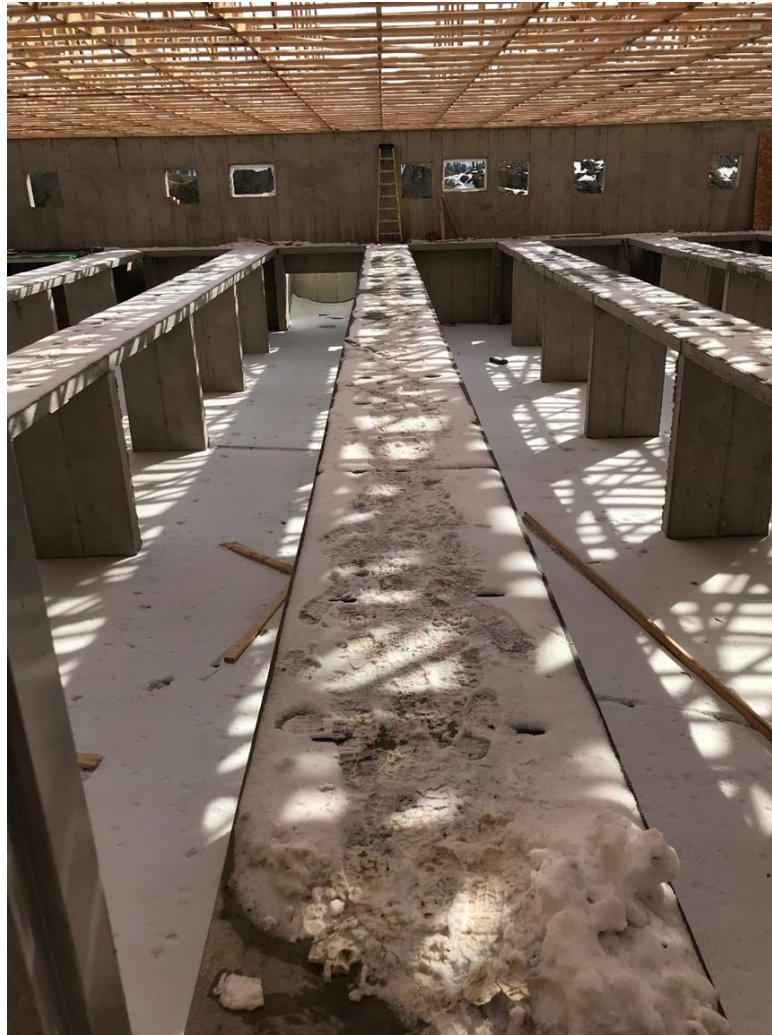
Access and Fall Protection



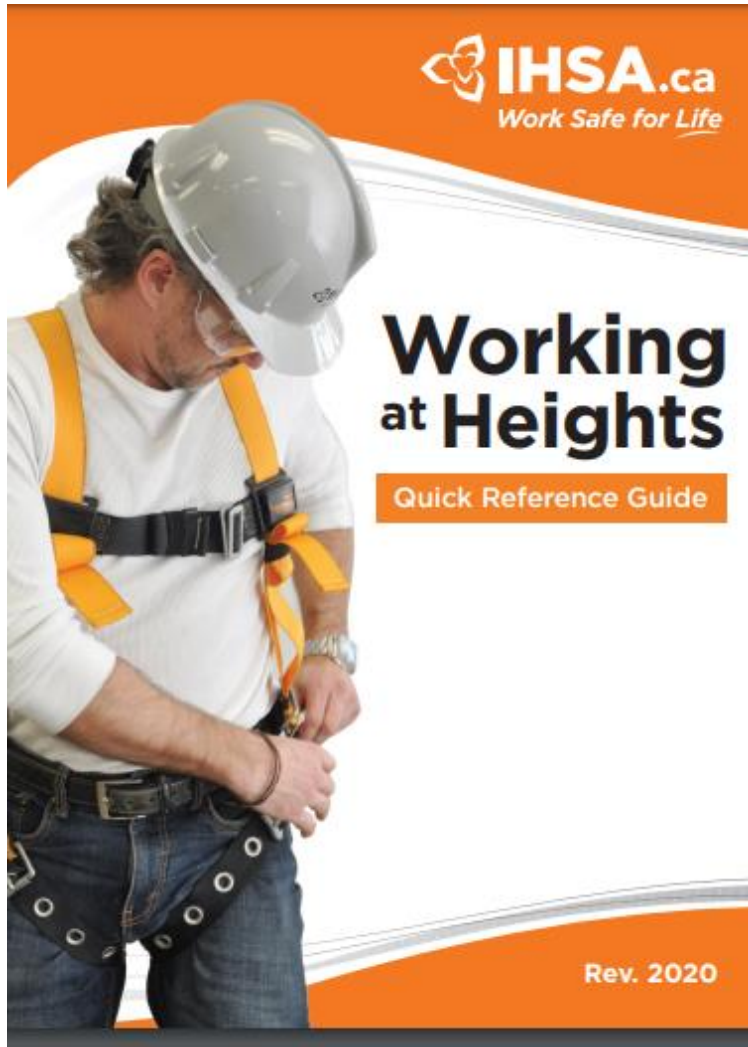
Access and Fall Protection



Access and Fall Protection



Fall Protection Considerations



Fall Protection Methods

Workers who may be exposed to a fall hazard must be protected by the highest-ranked method of fall protection that is practicable (O. Reg. 213/91, s. 26.1(2)). The higher the method is ranked, the less chance there is for a worker to be injured. These methods are ranked in order below.



Hazard Elimination
Changing the work process so the hazard no longer exists (e.g., building a roof on the ground).



Guardrails, Protective Covers, and Warning Barriers
Prevents a fall from unprotected edges or openings.



Travel Restraint System
Allows a worker to reach the edge but not fall over it.



Fall Restricting System
Designed to limit a worker's fall distance to 0.6 metres (2 feet).



Fall Arrest System
Designed to stop a falling worker before they hit the ground or objects below.



Safety Net
Designed to catch a falling worker before they hit the ground or objects below.

Work Safe for Life

[IHSA Working at Heights - Quick Reference Guide](#)

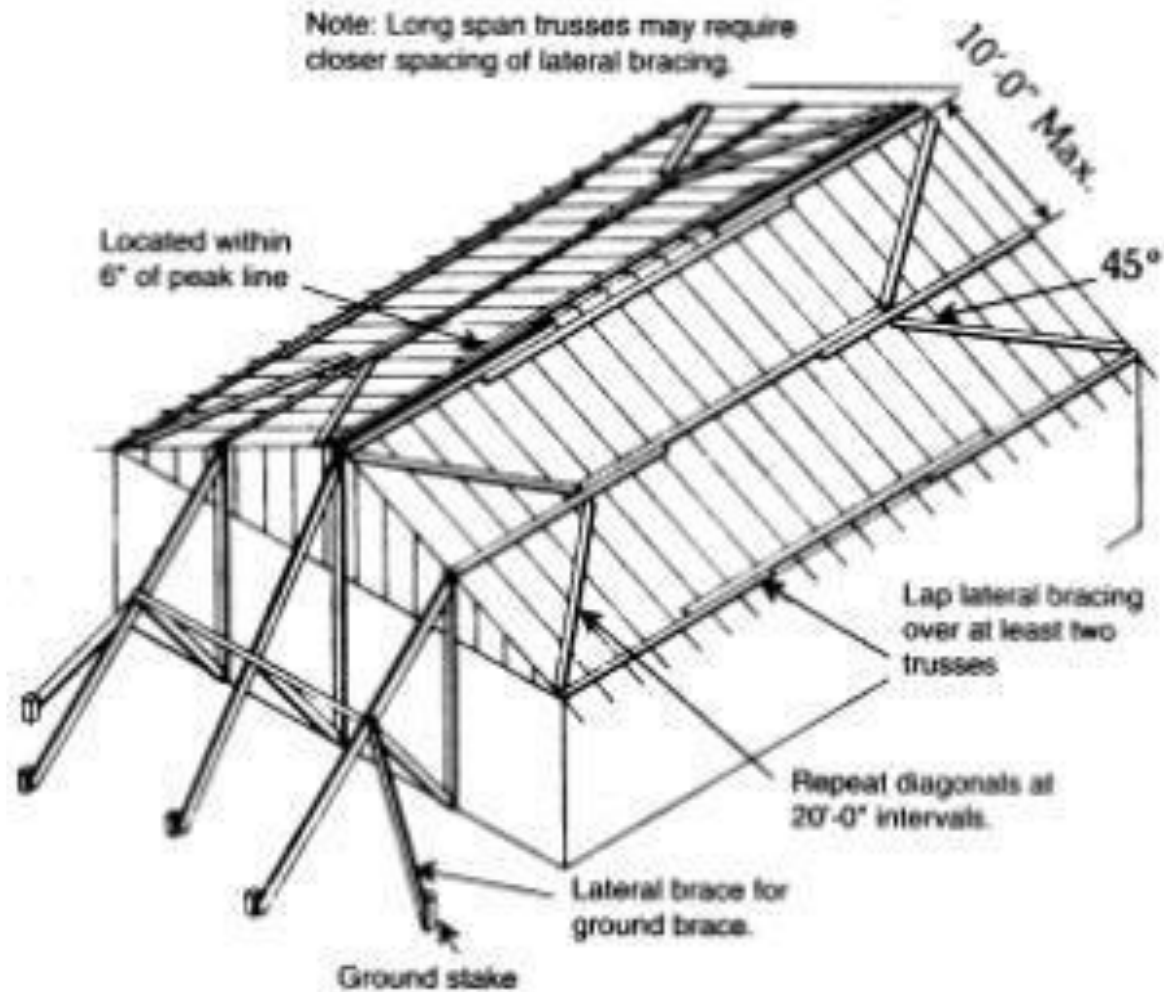
Truss Collapse Investigations

Proper Bracing

- Correct bracing techniques are clearly spelled out in documents such as the Building Component Safety Information Book – Guide to Good Practice for Handling, Installing & Bracing of Metal Plate Connected Wood Trusses (BCSI).
- The Structural Building Components Association (SBCA), the Truss Plate Institute, and the Truss Plate Institute of Canada jointly publish the BCSI. A condensed version of the BCSI (BCSI Summary Sheets) is often provided to the contractors in the jobsite package that accompanies the engineered drawings.
- These Summary Sheets provide accepted industry standards and best-practices for the handling, installation and bracing of wood trusses.
- [Wood Trusses: Handling, Erection & Bracing - Truss Plate Institute of Canada \(tpic.ca\)](https://www.tpic.ca)

Truss Collapse Investigations

Proper Bracing



Truss Collapse Investigations

Brant County



Truss Collapse Investigations

Walkerton



Truss Collapse Investigations

Guelph



Truss Collapse Investigations

Guelph



Truss Collapse Investigations

Central Huron



Truss Collapse Investigations

Sarnia

