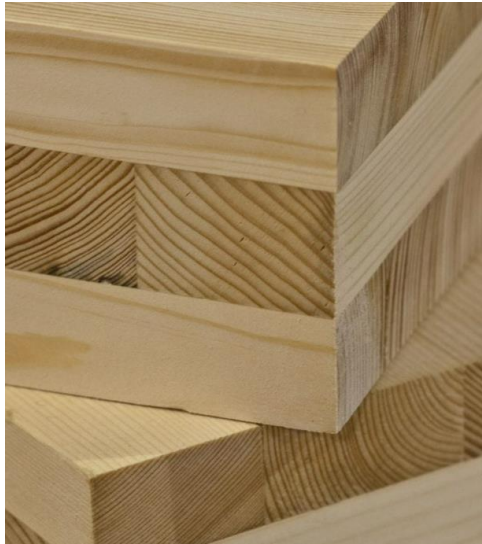


Mass Timber and Canadian Farm Construction – A Natural Fit

What is Mass Timber



Mass Timber Elements



CLT



Glulam



NLT



DLT



MPP



CLIPS



BOXX



RIBBED

Mass Timber Connections



Brackets



Brackets



Plates



Hooks



Concealed Junctions



Screws



Dowels



Adhesives

Mass Timber in Ontario





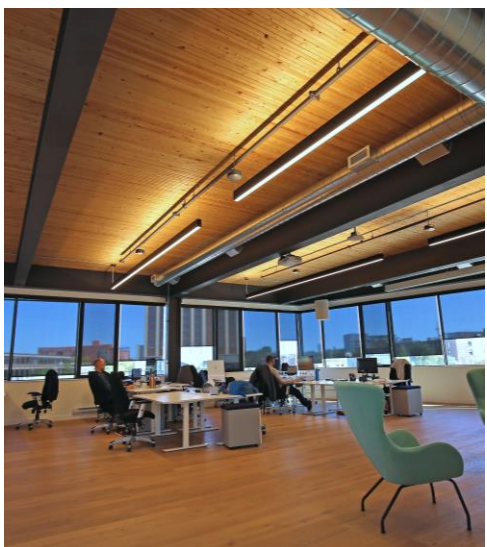
The Wood Revolution

Brock Commons Student Residence - UBC

In Ontario



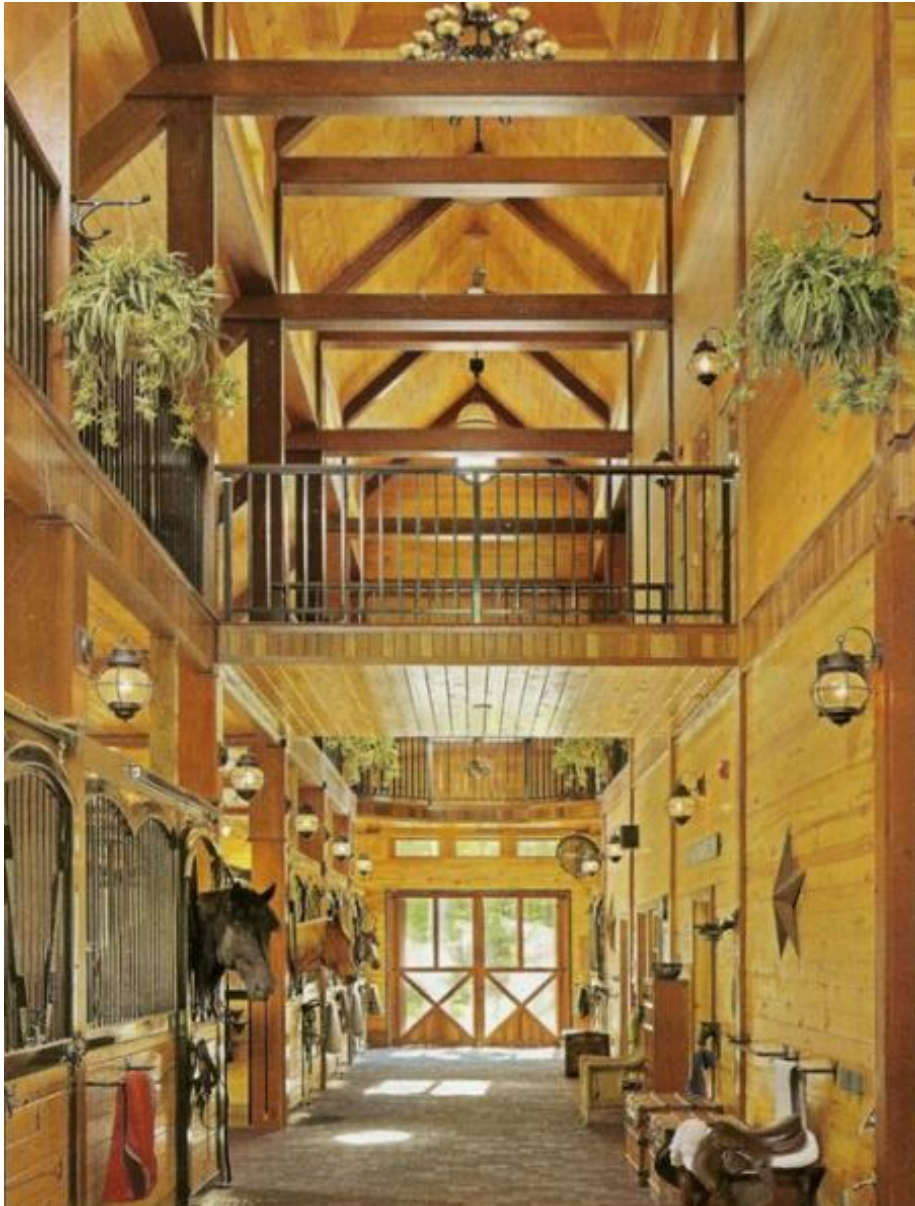
Element5



Why Mass Timber



Why Mass Timber



RENEWABLE RESOURCE
Sustainably forested trees capture CO₂, creating a carbon sink.

90% LESS TRAFFIC
Fewer vehicles operating on the construction site greatly reduces emissions.

75% FEWER ON-SITE WORKERS
A smaller team creates an efficient site with fewer commutes.

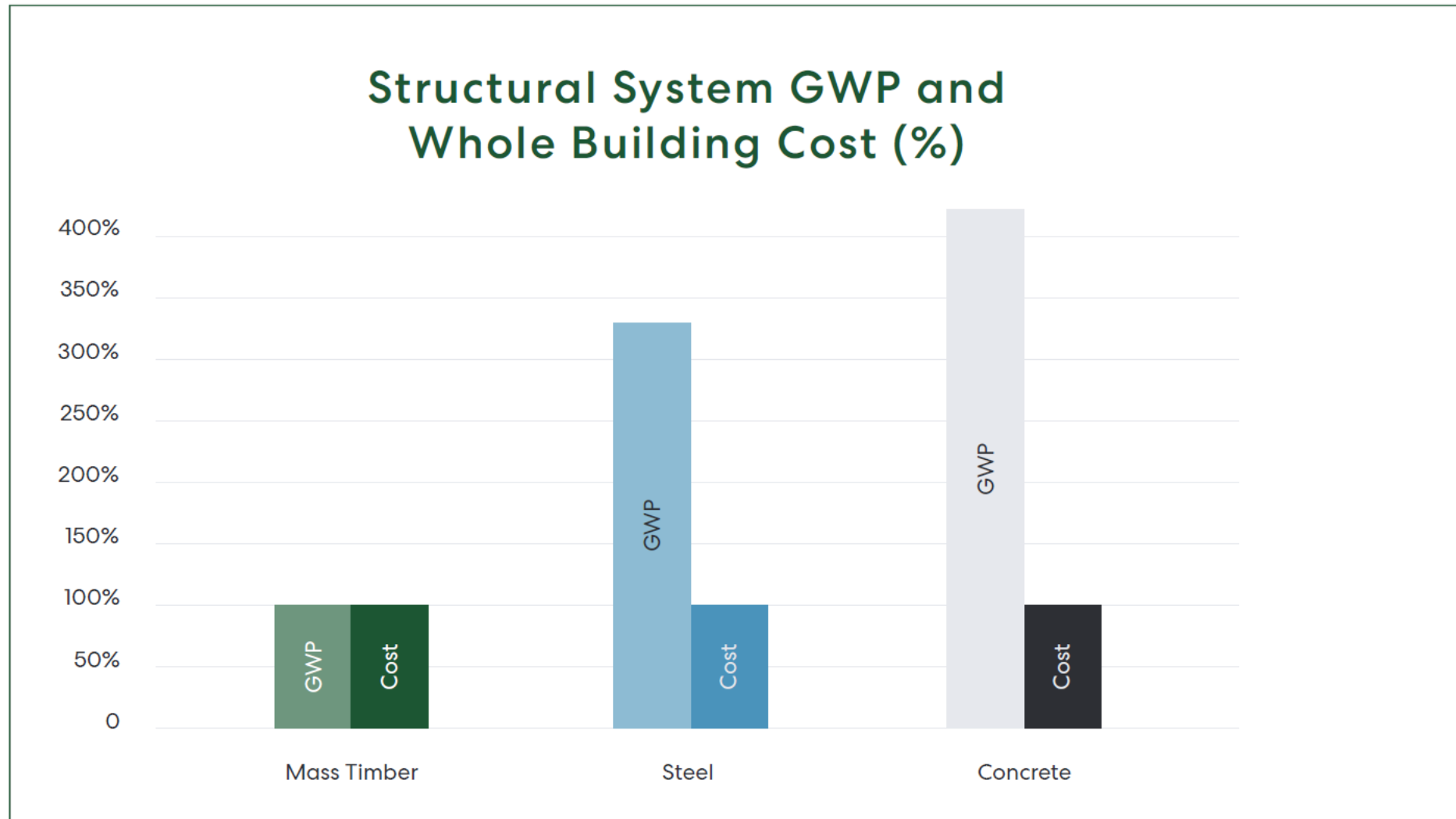
25% FASTER BUILD TIME
Building faster reduces the carbon footprint & environmental impact.



Aesthetic



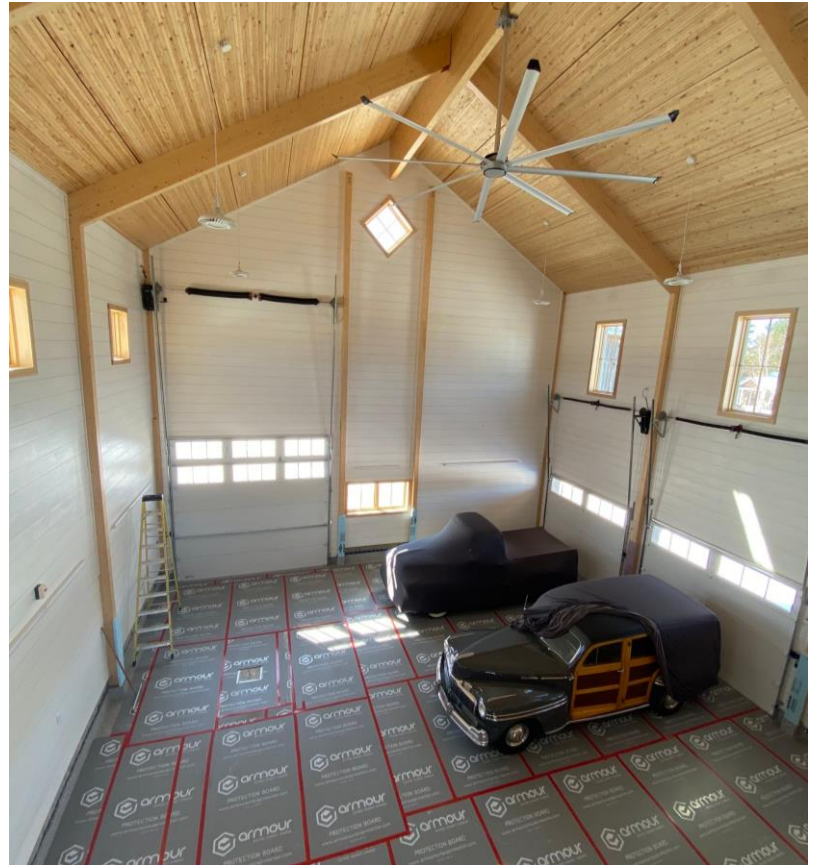
Cost and Global Warming Potential (GWP) Comparison



Source: Platte Fifteen Life Cycle Assessment, KL&A Engineers and Builders, Adolfsen & Peterson, July 2021



Royal City Nursery Retail Store by Post Structures



Douglas Hobby Farm by Post Structures

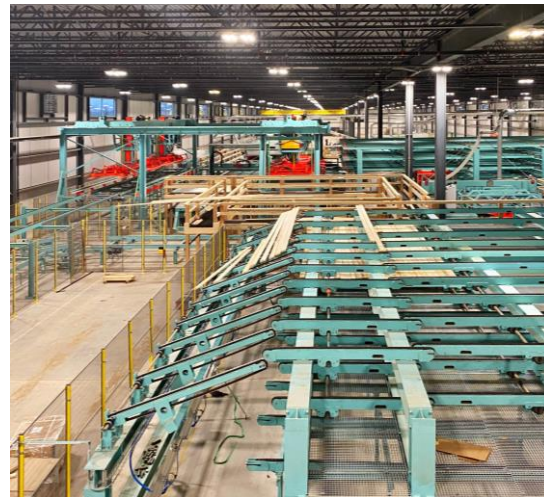


Holmes Agro Fertilizer Storage by Post Structures

Element5 LP



- Ontario company, founded in 2015
- Leaders in the Mass Timber Construction Revolution
- We work with solid wood – World's only renewable building resource
- St. Thomas Plant – 137,000 s.f.
- Capacity to produce 45,000 m3 of CLT & 5,000 m3 of Glulam
- Vertically Integrated – We source all our wood from Ontario FSC Certified forests



YWCA Kitchener, ON – 23,000 s.f., 4-storey, 41 Units

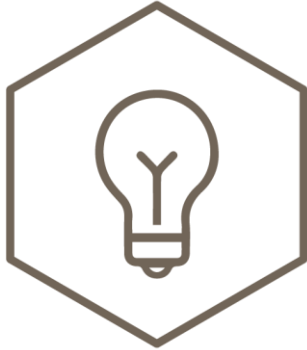




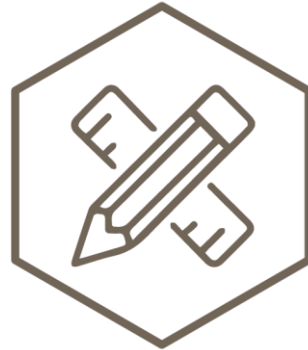
ELEMENT5
MODERN TIMBER BUILDINGS



Cost
Consulting



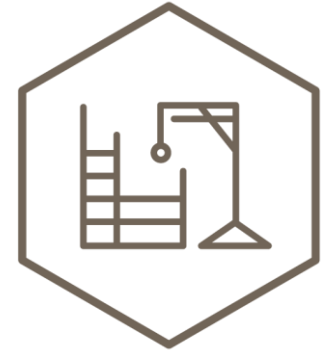
Design
Consulting



Engineering



Fabrication



Assembly





ELEMENT5
MODERN TIMBER BUILDINGS

CLT Billets

Order Desk:

Michael Leach

E: Michael.Leach@elementfive.co

C: (888) 670-7713 x45



Visual (Sanded) Billet

	Depth:	Width:	Length:	m ³ :	Weight:
3 Layers	105 mm	3,100 mm	15,800 mm	5.040	2,369 kg
5 Layers	175 mm	3,100 mm	15,800 mm	8.400	3,948 kg
7 Layers	245 mm	3,100 mm	15,800 mm	11.760	5,527 kg

Non-Visual (Non Sanded) Billet

	Depth:	Width:	Length:	m ³ :	Weight:
3 Layers	105 mm	3,100 mm	15,800 mm	5.040	2,369 kg
5 Layers	175 mm	3,100 mm	15,800 mm	8.400	3,948 kg
7 Layers	245 mm	3,100 mm	15,800 mm	11.760	5,527 kg

Thank you!



E l e m e n t 5 L P

Patrick Chouinard

Founder & VP Market Strategy & Corp.

Communications

T: 289 684 8973

E: patrick@elementfive.co

www.elementfive.co